

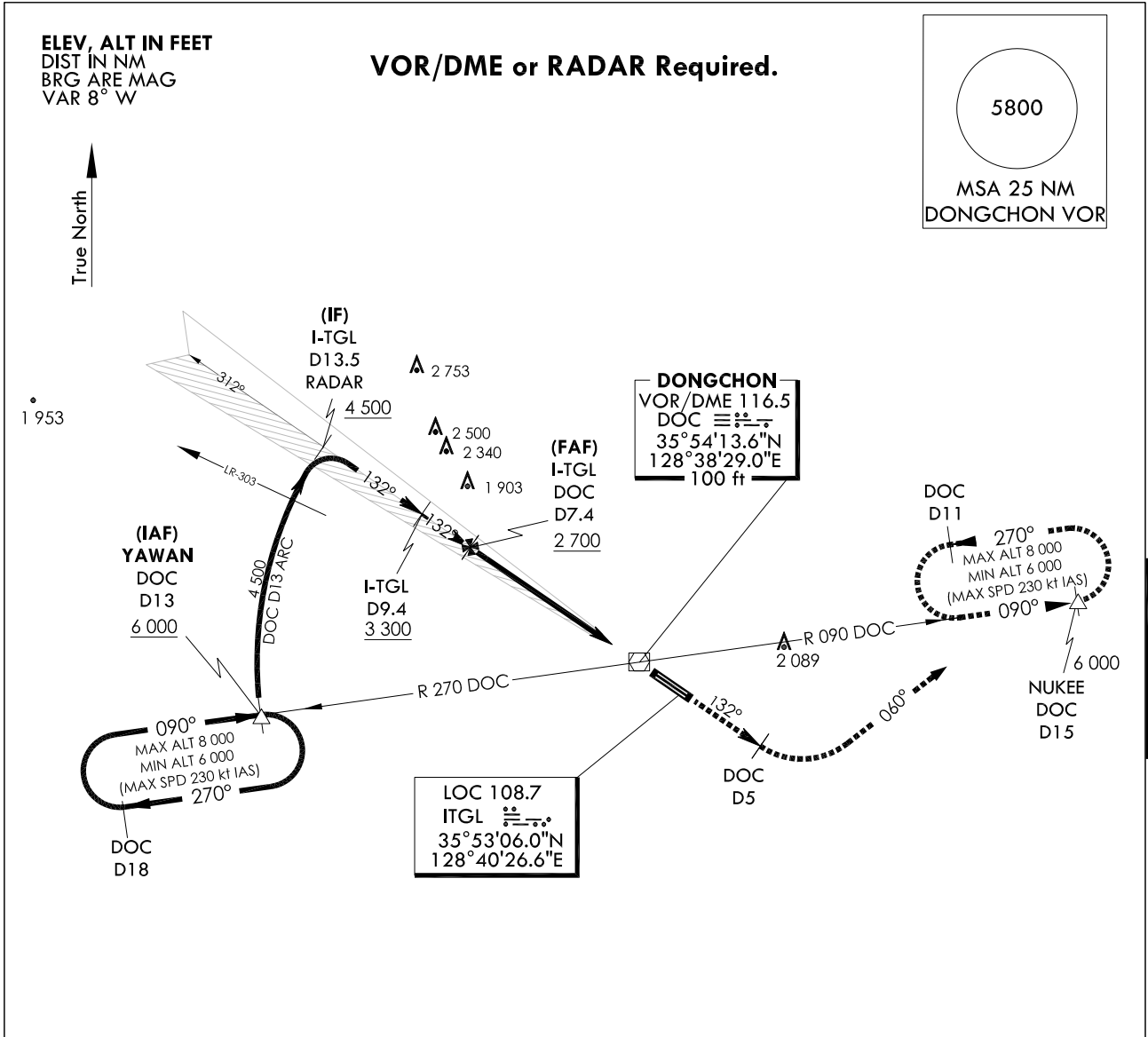
**INSTRUMENT
APPROACH
CHART**

AERODROME ELEV 120 ft
HEIGHTS RELATED TO
THR RWY 13R - ELEV 110 ft
HIGHEST ELEV TDZ 111 ft

DAEGU APP 135.9 346.3
DAEGU TWR 126.2 236.6
365.0

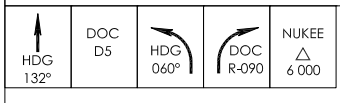
DAEGU/Daegu Intl(RKTN)
ILS
RWY 13R

Note : Approach and circle to land under U.S. TERPS.



1. Circling is not authorized.
2. Missed approach requires minimum climb of 390 ft per NM to 6000 ft.

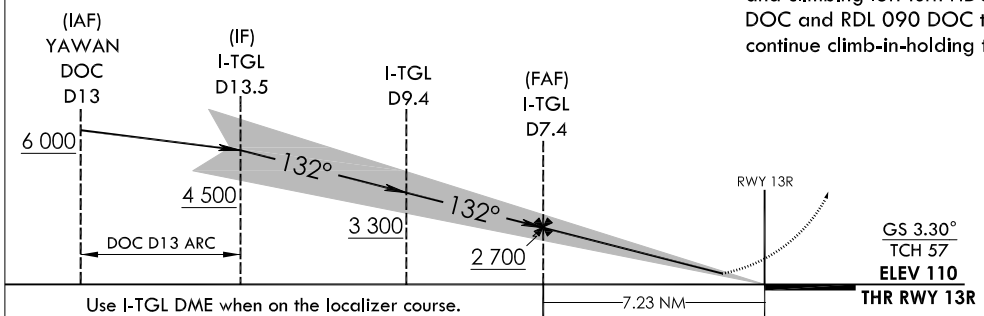
NOT TO SCALE



MISSED APPROACH CLIMB RATE TABLE

RWY	Knots	60	120	180	240	300	TO
13R	V/V(fpm)	390	780	1 170	1 560	1 950	6 000

MISSED APPROACH
Climb to 6 000 ft via HDG 132° to DOC 5 DME and climbing left turn HDG 060° to intercept RDL 090 DOC and RDL 090 DOC to NUKEE and hold, continue climb-in-holding to 6 000 ft.



CATEGORY		A	B	C	D	E
S-ILS 13R	FULL		657 - 1 1/2	546(600 - 1 1/2)		
	ALS inop		657 - 1 5/8	546(600 - 1 5/8)		

Change : Amended phrases.

INTENTIONALLY

LEFT

BLANK

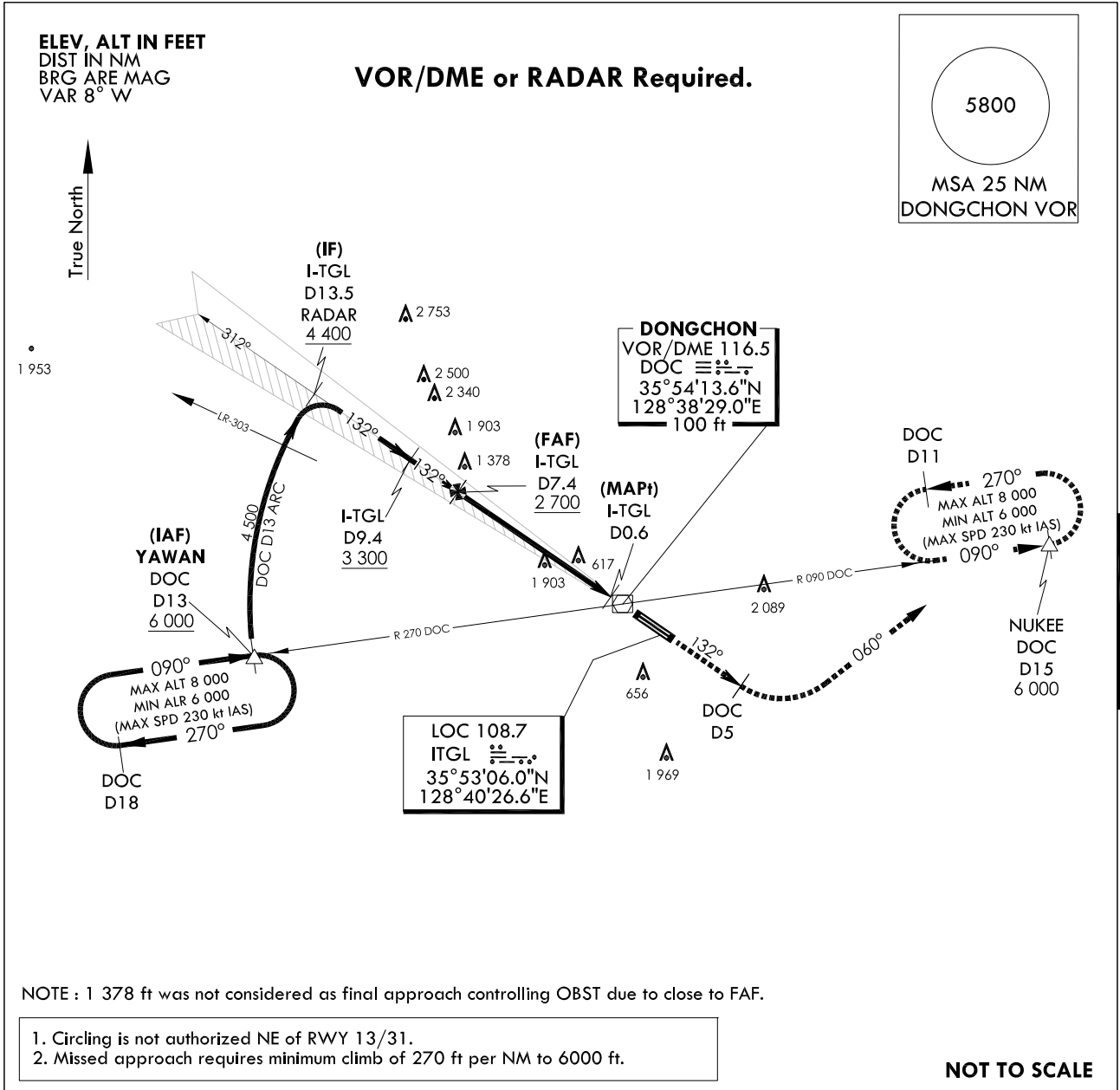
**INSTRUMENT
APPROACH
CHART**

AERODROME ELEV 120 ft
HEIGHTS RELATED TO
THR RWY 13R - ELEV 110 ft
HIGHEST ELEV TDZ 111 ft
U.S. TERPS.

DAEGU APP 135.9 346.3
DAEGU TWR 126.2 236.6
365.0

**DAEGU/Daegu Intl(RKTN)
LOC/DME
RWY 13R**

Note : Approach and circle to land under U.S. TERPS.



NOTE : 1 378 ft was not considered as final approach controlling OBST due to close to FAF.

1. Circling is not authorized NE of RWY 13/31.
2. Missed approach requires minimum climb of 270 ft per NM to 6000 ft.

NOT TO SCALE

↑ HDG 132°	DOC D5	HDG 060°	DOC R-090	NUKEE △ 6 000
------------------	-----------	-------------	--------------	---------------------

TRANSITION ALT 14 000
TRANSITION LVL FL 140

(IAF) YAWAN R 270 DOC D13 6 000

(IF) I-TGL D13.5 4 400

I-TGL D9.4 3 300

(FAF) I-TGL D7.4 2 700

(MAPt) I-TGL D0.6 617

RWY 13R

VDA 3.30°
TCH 57
ELEV 110
THR RWY 13R

Use I-TGL DME when on the localizer course. 6.79 NM 0.44

RWY	Knots	60	120	180	240	300	TO
13R	V/V(fpm)	270	530	790	1 050	1 310	6 000

MISSED APPROACH
Climb to 6 000 ft via HDG 132° to DOC 5 DME and climbing left turn HDG 060° to intercept RDL 090 DOC and RDL 090 DOC to NUKKEE and hold, continue climb-in-holding to 6 000 ft.

CATEGORY	A	B	C	D	E
S-LOC 13R	FULL 1 260/55 1 149(1 200-1)	1 260/60 1 149(1 200-1 1/4)	1 260 - 3	1 149(1 200 - 3)	
	ALS inop 1 260/60 1 149(1 200-1 1/4)	1 260 1 1/2 1 149(1 200-1 1/2)	1 260 - 3	1 149(1 200 - 3)	
CIRCLING	1 260 - 1 1/4 1 140(1 200 - 1 1/4)	1 260 - 1 1/2 1 140(1 200 - 1 1/2)	1 260 - 3 1 140(1 200 - 3)	1 300 - 3 1 180(1 200 - 3)	2 340 - 3 2 220(2 300 - 3)

Change : Amended phrases.

INTENTIONALLY

LEFT

BLANK

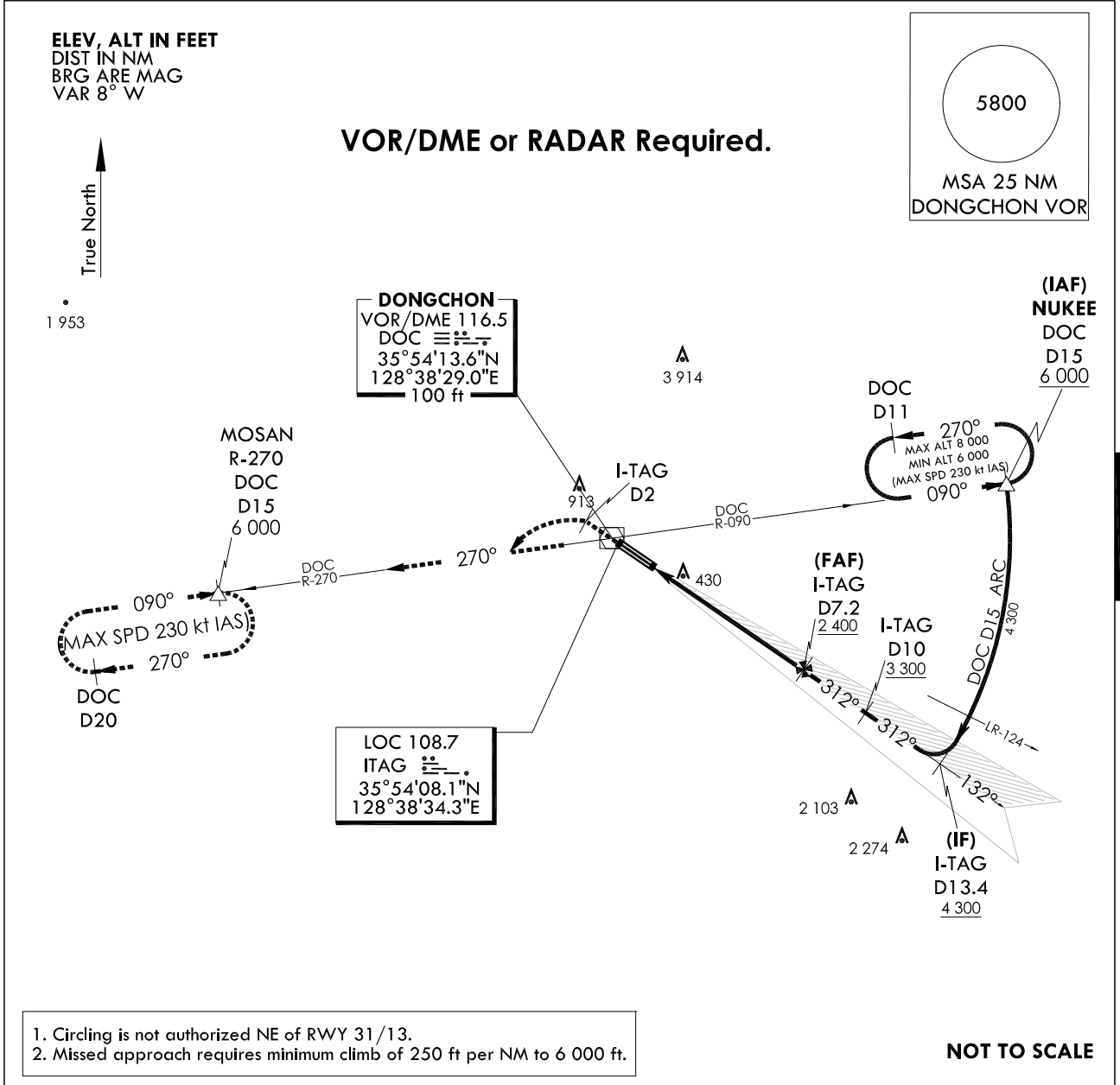
**INSTRUMENT
APPROACH
CHART**

AERODROME ELEV 120 ft
HEIGHTS RELATED TO
THR RWY 31L - ELEV 118 ft
HIGHEST ELEV TDZ 118 ft

DAEGU APP	135.9	346.3
DAEGU TWR	126.2	236.6
	365.0	

DAEGU/Daegu Intl(RKTN)
ILS
RWY 31L

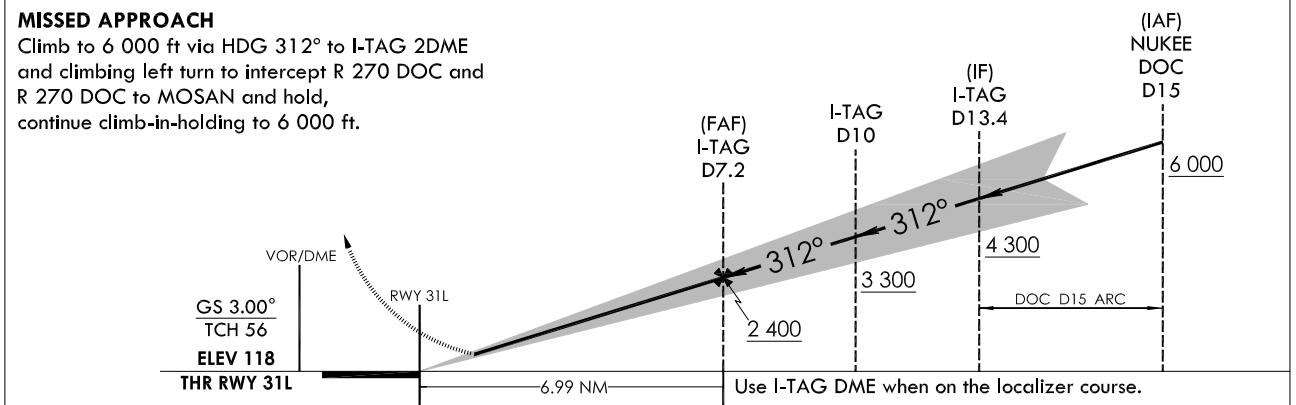
Note : Approach and circle to land under U.S. TERPS.



1. Circling is not authorized NE of RWY 31/13.
2. Missed approach requires minimum climb of 250 ft per NM to 6 000 ft.

NOT TO SCALE

HDG 312°	I-TAG D2	DOC R-270	MOSAN 6000	TRANSITION ALT 14 000 TRANSITION LVL FL 140	MISSED APPROACH CLIMB RATE TABLE						
				RWY 31L	Knots V/V(fpm)	60	120	180	240	300	TO



CATEGORY		A	B	C	D
S-ILS 31L	FULL		318 / 24	200(200 - 1/2)	
	ALS inop		318 / 40	200(200 - 3/4)	

INTENTIONALLY

LEFT

BLANK

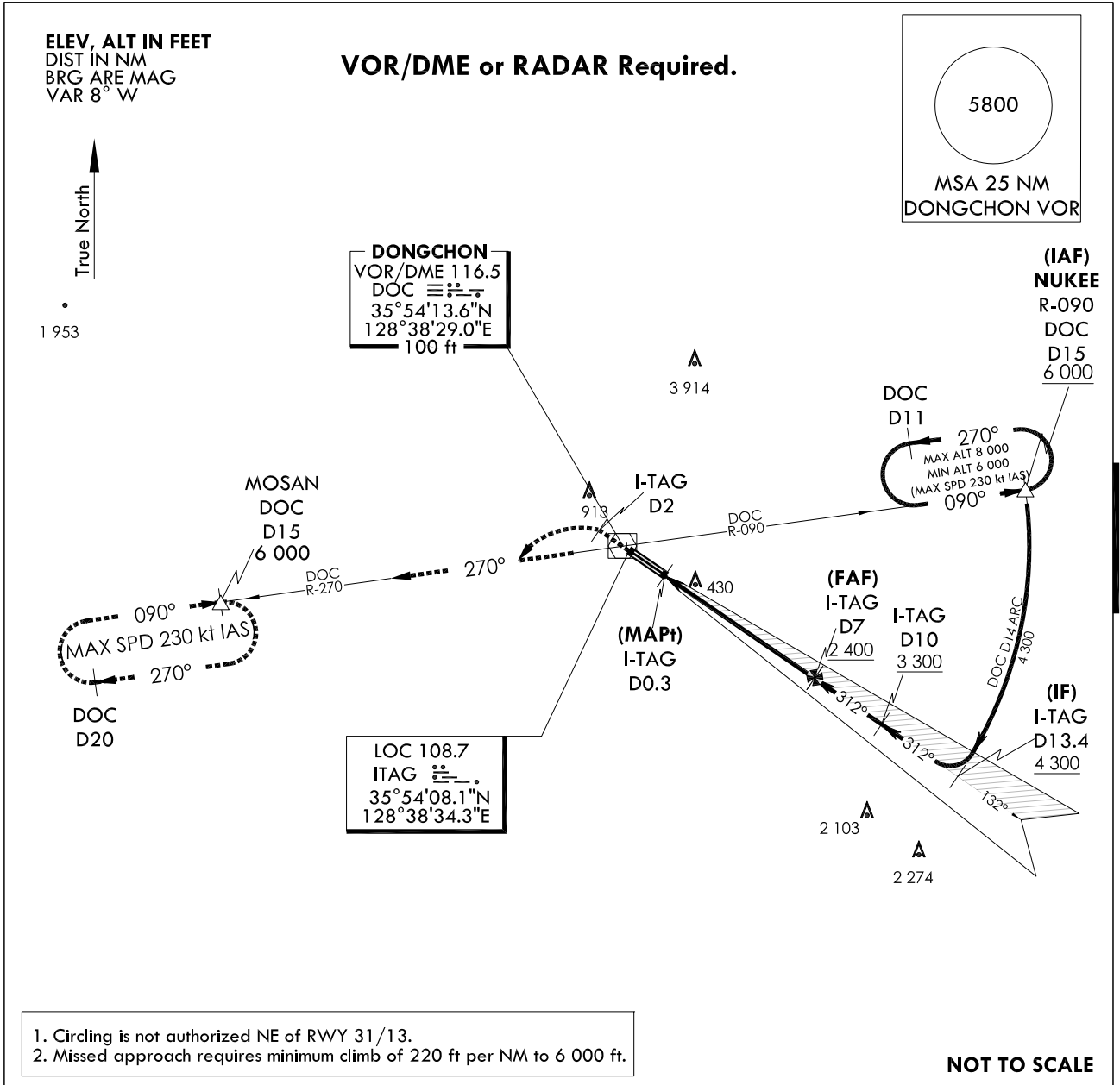
**INSTRUMENT
APPROACH
CHART**

AERODROME ELEV 120 ft
HEIGHTS RELATED TO
THR RWY 31L - ELEV 118 ft
HIGHEST ELEV TDZ 118 ft

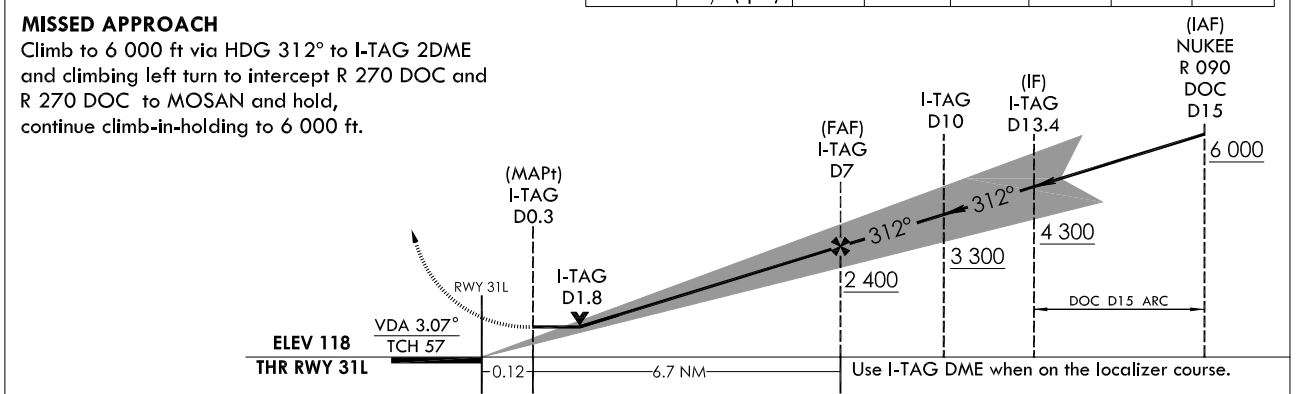
DAEGU APP	135.9	346.3
DAEGU TWR	126.2	236.6
	365.0	

DAEGU/Daegu Intl(RKTN)
LOC/DME
RWY 31L

Note : Approach and circle to land under U.S. TERPS.



RWY	Knots	MISSED APPROACH CLIMB RATE TABLE					
		60	120	180	240	300	TO
31L	V/V(fpm)	220	430	640	850	1 060	6 000



CATEGORY		A	B	C	D
S-LOC 31L	FULL	680/40	562(600 - 3/4)	680-1 1/4	562(600 - 1 1/4)
	ALS inop	680/55	562(600 - 1)	680-1 5/8	562(600 - 1 5/8)
CIRCLING		760 - 1	960 - 1 1/4	980 - 2 1/2	1 300-3
		640(700 - 1)	840(900 - 1 1/4)	860(900 - 2 1/2)	1 180(1 200-3)

INTENTIONALLY

LEFT

BLANK

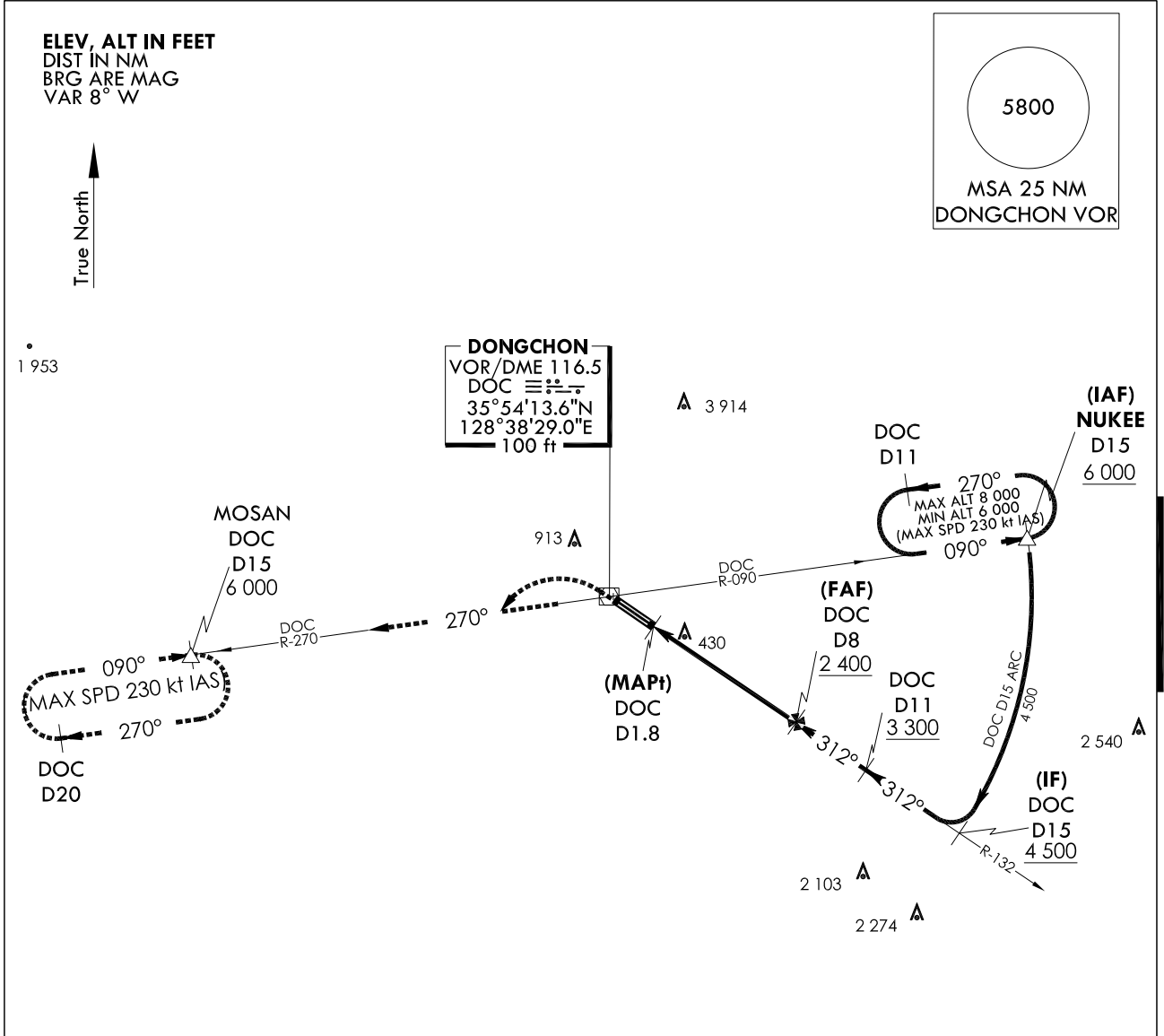
**INSTRUMENT
APPROACH
CHART**

AERODROME ELEV 120 ft
HEIGHTS RELATED TO
THR RWY 31L - ELEV 118 ft
HIGHEST ELEV TDZ 118 ft

DAEGU APP 135.9 346.3
DAEGU TWR 126.2 236.6
365.0

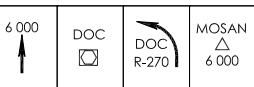
**DAEGU/Daegu Intl(RKTN)
VOR/DME
RWY 31L**

Note : Approach and circle to land under U.S. TERPS.



1. Circling is not authorized NE of RWY 31/13.
2. Missed approach requires minimum climb of 250 ft per NM to 6 000 ft.

NOT TO SCALE



TRANSITION ALT 14 000
TRANSITION LVL FL 140

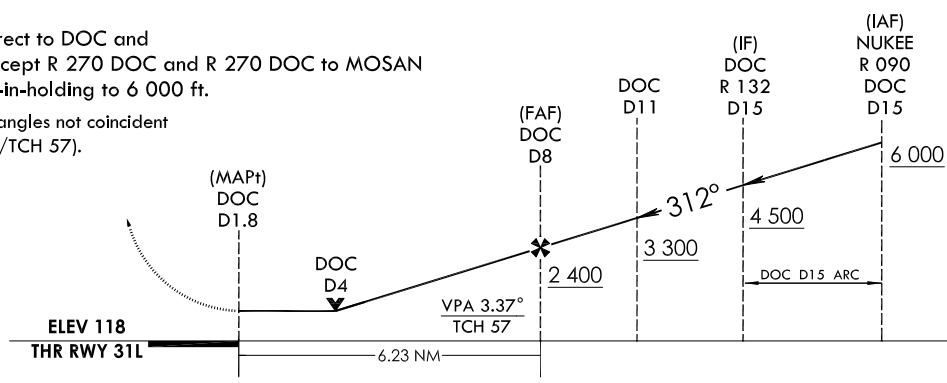
MISSED APPROACH CLIMB RATE TABLE

RWY	Knots	60	120	180	240	300	TO
31L	V/V(fpm)	250	470	700	930	1 160	6 000

MISSED APPROACH

Climb to 6 000 ft via direct to DOC and climbing left turn to intercept R 270 DOC and R 270 DOC to MOSAN and hold, continue climb-in-holding to 6 000 ft.

NOTE : VGSI and descent angles not coincident
(VGSI Angle 3.00°/TCH 57).



CATEGORY		A	B	C	D
S-VOR 31L	FULL	880/40	762(800 - 3/4)	880-1 3/4	762(800-1 3/4)
	ALS inop	880/55	762(800 - 1)	880-2 1/2	762(800-2 1/2)
CIRCLING		880 - 1 760(800 - 1)	960 - 1 1/4 840(900 - 1 1/4)	980 - 2 1/2 860(900 - 2 1/2)	1 300-3 1 180(1 200-3)

Change : Amended phrases.

INTENTIONALLY

LEFT

BLANK

**INSTRUMENT
APPROACH
CHART**

AERODROME ELEV 120 ft
HEIGHTS RELATED TO
THR RWY 31R - ELEV 120 ft
HIGHEST ELEV TDZ 120 ft

DAEGU APP	135.9	346.3
DAEGU TWR	126.2	236.6
		365.0

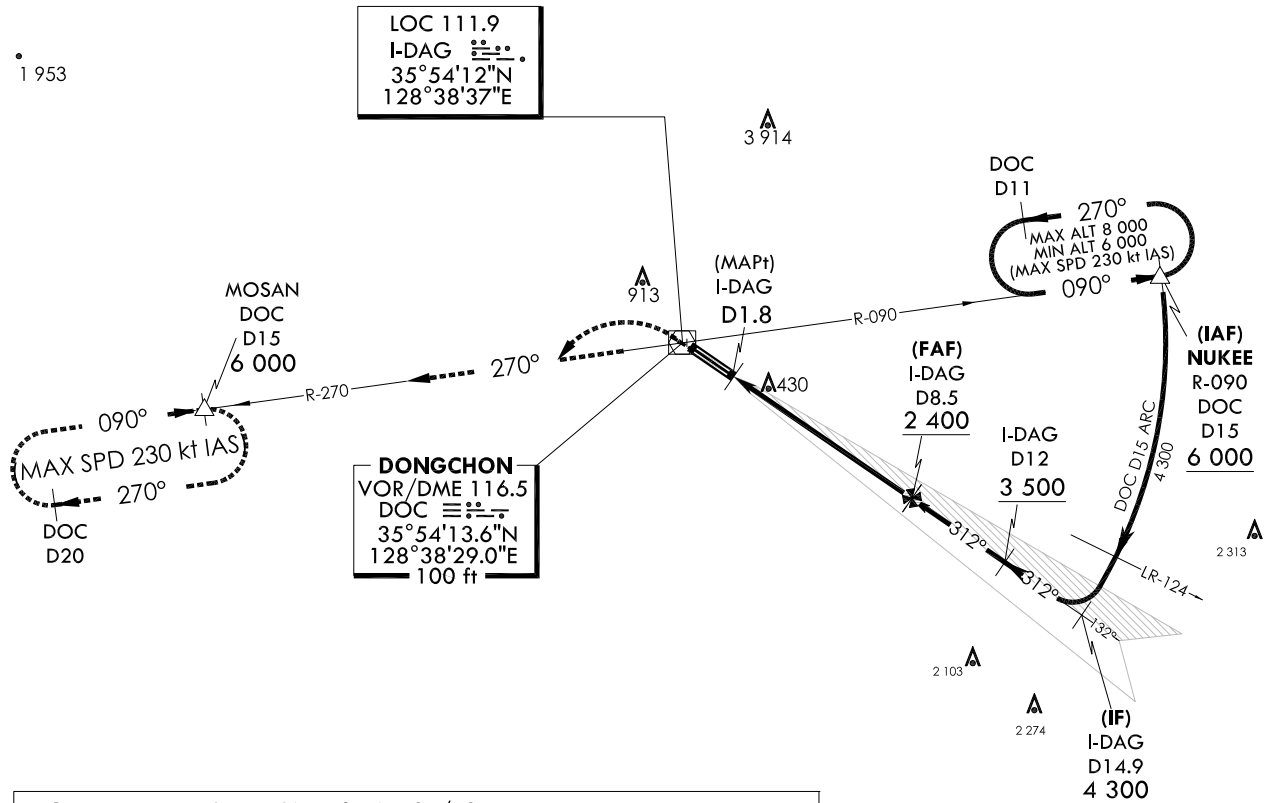
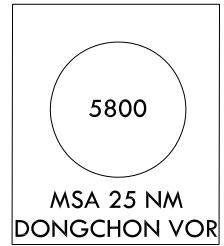
**DAEGU/Daegu Intl(RKTN)
LOC/DME
RWY 31R**

Note : Approach and circle to land under U.S. TERPS.

ELEV, ALT IN FEET
DIST IN NM
BRG ARE MAG
VAR 8° W

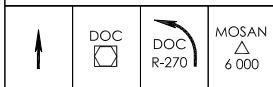


VOR/DME or RADAR Required.



- 1. Circling is not authorized NE of RWY 31/13.
- 2. Missed approach requires minimum climb of 210 ft per NM to 6 000 ft.

NOT TO SCALE



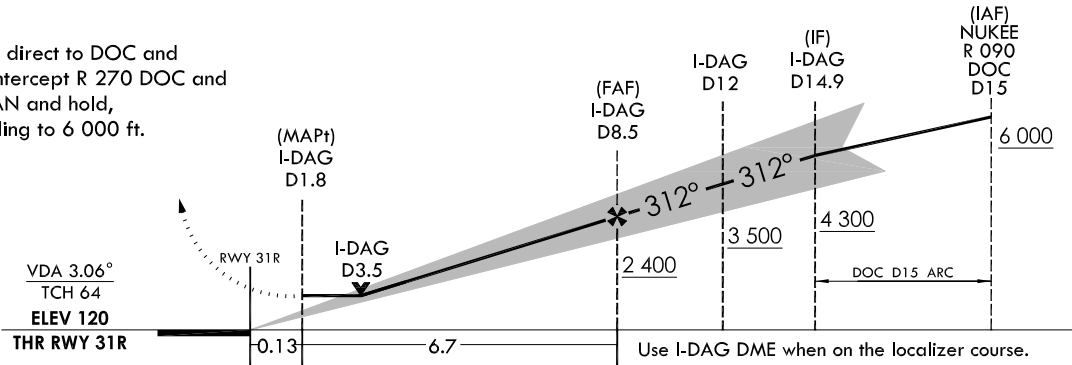
TRANSITION ALT 14 000
TRANSITION LVL FL 140

MISSED APPROACH CLIMB RATE TABLE

RWY	Knots	60	120	180	240	300	TO
31R	V/V(fpm)	210	420	630	830	1 040	6 000

MISSED APPROACH

Climb to 6 000 ft via direct to DOC and climbing left turn to intercept R 270 DOC and R 270 DOC to MOSAN and hold, continue climb-in-holding to 6 000 ft.



CATEGORY		A	B	C	D
S-LOC 31R	FULL	780/40	660(700 - 3/4)	780-1 3/8	660(700 - 1 3/8)
	ALS inop	780/55	660(700 - 1)	780-1 7/8	660(700 - 1 7/8)
CIRCLING		780 - 1	960 - 1 1/4	980 - 2 1/2	1 300-3
		660(700 - 1)	840(900 - 1 1/4)	860(900 - 2 1/2)	1 180(1200-3)

Change : Amended phrases.

INTENTIONALLY

LEFT

BLANK

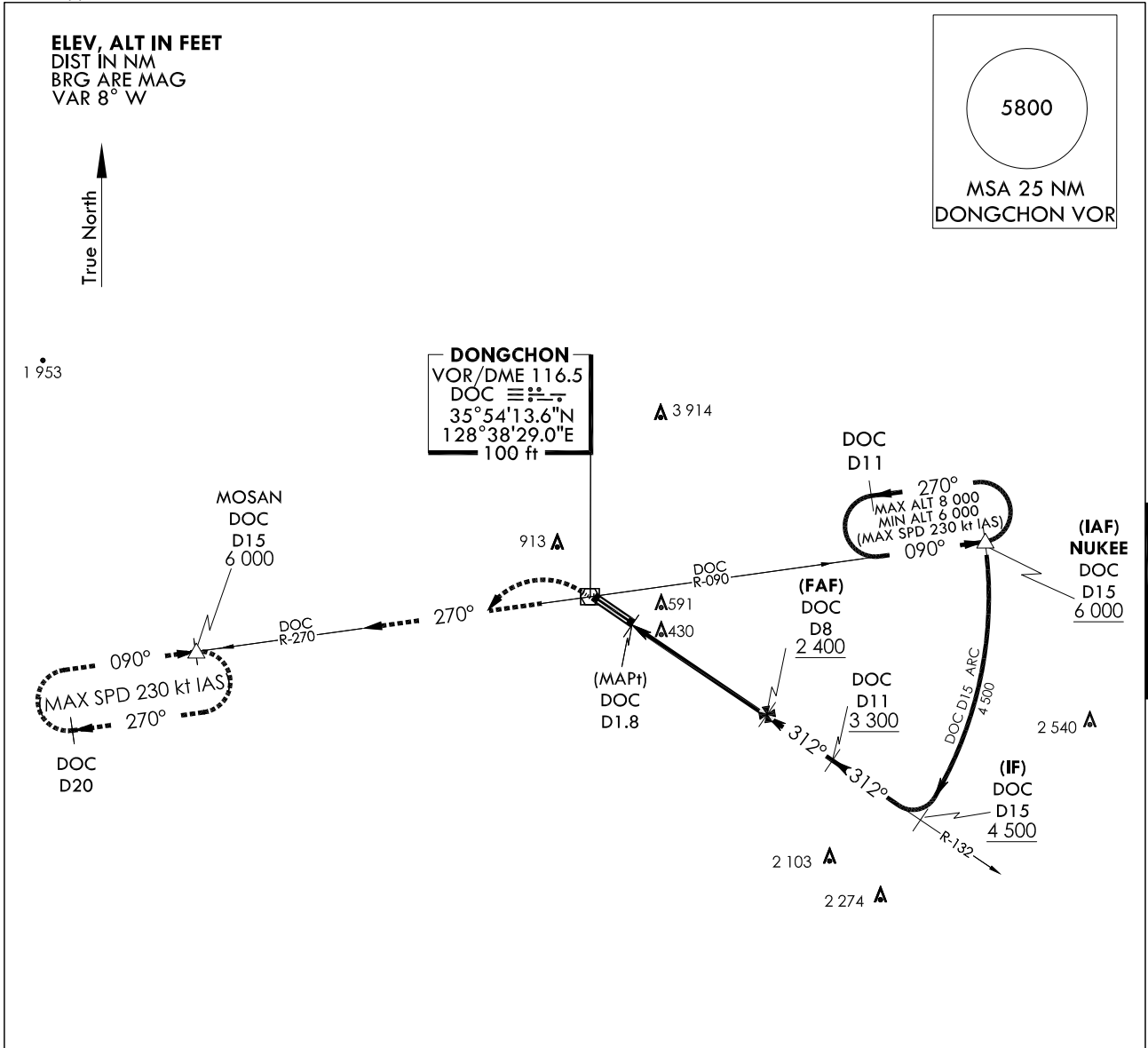
**INSTRUMENT
APPROACH
CHART**

AERODROME ELEV 120 ft
HEIGHTS RELATED TO
THR RWY 31R - ELEV 120 ft
HIGHEST ELEV TDZ 120 ft

DAEGU APP	135.9	346.3
DAEGU TWR	126.2	236.6
	365.0	

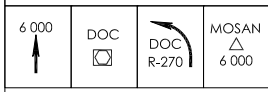
**DAEGU/Daegu Intl(RKTN)
VOR/DME
RWY 31R**

Note : Approach and circle to land under U.S. TERPS.



1. Circling is not authorized NE of RWT 31/13.
2. Missed approach requires minimum climb of 250 ft per NM to 6000 ft.

NOT TO SCALE



TRANSITION ALT 14 000
TRANSITION LVL FL 140

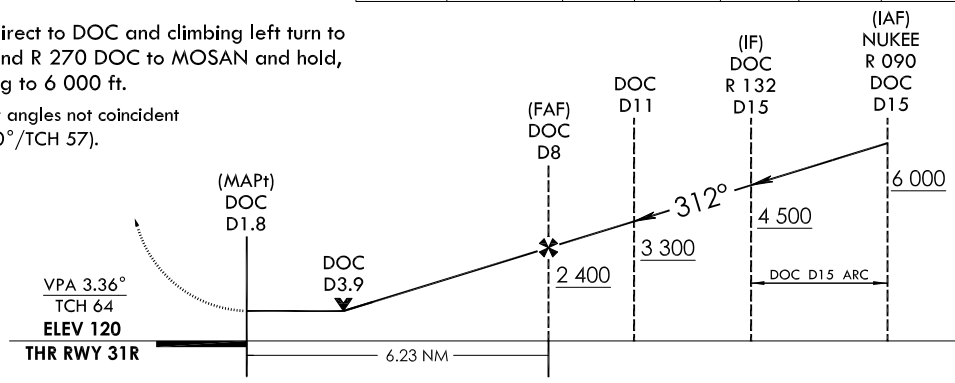
MISSED APPROACH CLIMB RATE TABLE

RWY	Knots	60	120	180	240	300	TO
31R	V/V(fpm)	250	470	700	930	1 160	6 000

MISSED APPROACH

Climb to 6 000 ft via direct to DOC and climbing left turn to intercept R 270 DOC and R 270 DOC to MOSAN and hold, continue climb-in-holding to 6 000 ft.

NOTE : VGSI and descent angles not coincident
(VGSI Angle 3.00°/TCH 57).



CATEGORY		A	B	C	D
S-VOR 31R	FULL	880/40	760(800 - 3/4)	880-1 3/4	760(800-1 3/4)
	ALS inop	880/55	760(800 - 1)	880-2	760(800-2)
CIRCLING		880 - 1	960 - 1 1/4	980 - 2 1/2	1 300-3
		760(800 - 1)	840(900 - 1 1/4)	860(900 - 2 1/2)	1 180(1 200-3)

Change : Amended phrases.

INTENTIONALLY

LEFT

BLANK